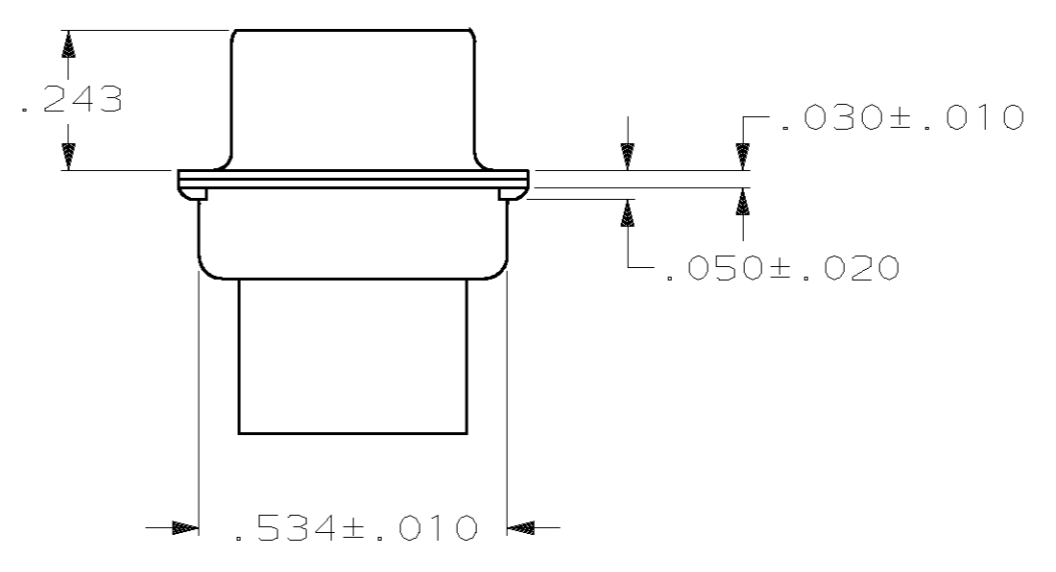
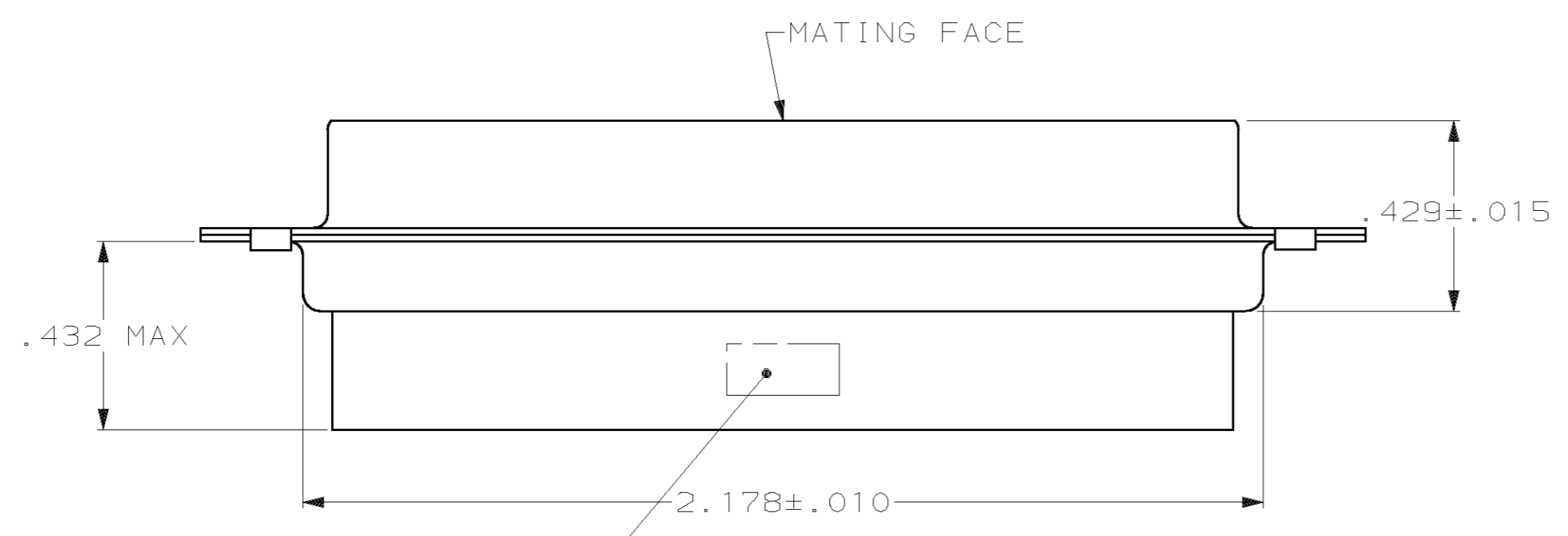
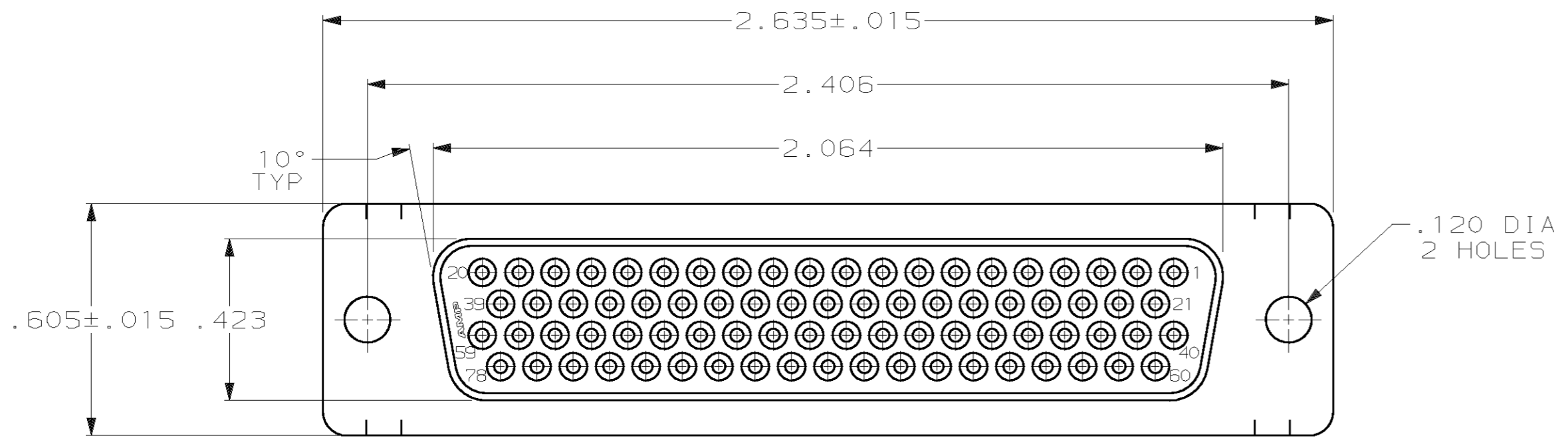


THIS DRAWING IS UNPUBLISHED. RELEASED FOR PUBLICATION
 BY AMP INCORPORATED. ALL RIGHTS RESERVED.

| LOC | DIST | REVISIONS | | | | | |
|-----|------|-----------|-----|------------------------------|-----------|-----|------|
| GP | 00 | P | LTR | DESCRIPTION | DATE | DWN | APVD |
| | | 0 | | RELEASED PER EC 0513-0209-03 | 02 JAN 04 | LB | 5B |



1. CONNECTOR ACCEPTS 22 DF SOCKET CONTACTS, RETENTION TINES ARE AN INTEGRAL PART OF INSERT.
2. FLAME RETARDANT 94V-0 RATED GLASS FILLED NYLON, COLOR: BLACK.
3. CARBON STEEL.
4. .000200 MIN. TIN PLATE OVER .000100 MIN. COPPER UNDERPLATE.

1658685-1
PART NUMBER

| | | | | |
|---|--|--------------------------------|---|--------------------|
| THIS DRAWING IS A CONTROLLED DOCUMENT. | | DWN L. BAUM 02JAN04 | AMP Incorporated Harrisburg, PA 17105-3608 | |
| DIMENSIONS: INCH | | CHK S. BOLASH 02JAN04 | NAME M. WALMSLEY 02JAN04 | |
| TOLERANCES UNLESS OTHERWISE SPECIFIED: 0 PLC ±- 1 PLC ±- 2 PLC ±- 3 PLC ±.005 4 PLC ±- ANGLES ±2° | | APVD M. WALMSLEY 02JAN04 | PRODUCT SPEC 108-1268 | |
| MATERIAL MOLDED PARTS: △ SHELLS: △ | | FINISH SHELLS: △ | APPLICATION SPEC 114-10001 | RESTRICTED TO |
| CUSTOMER DRAWING | | WEIGHT - | SIZE A2 | CAGE CODE 00779 |
| | | SCALE 3:1 | DRAWING NO 1658685 | REV 0 |